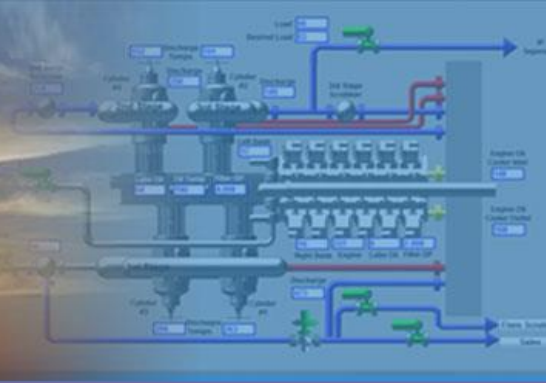




# OSS™ RelationalSCADA®



## OSS™ RelationalSCADA®

Operational Software Suite™ (OSS) RelationalSCADA® is a SCADA and Measurement solution like none other. RelationalSCADA uses both an object, or asset model, plus the [Relational Model](#) to create the most advanced solution possible. In addition, it also combines data collection, real-time analysis and visualization with EFM Management and the ability to correct Flow Computer history based on industry standards.

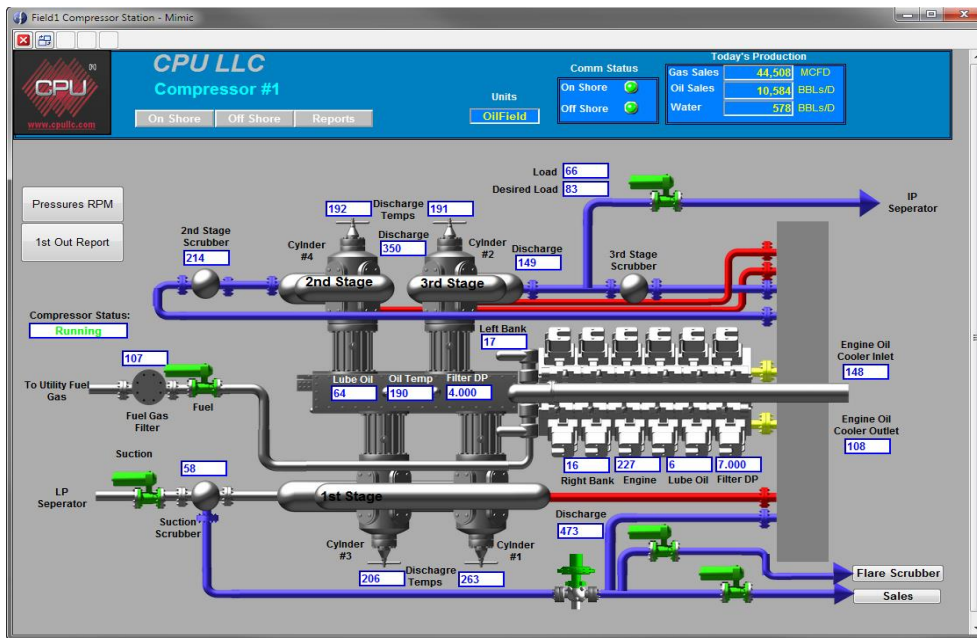
## Real-time SCADA Features

- Real-time Data collection,
- Real-time Data Historian built-in,
- Advanced Real-time Trending,
- Human-Machine Interface (HMI),
- Mimic creation (for HMI), configuration and control,
- Object type definitions, instances and easy configuration,
- Complex Daily Production Reporting and Allocations,
- Real-time alarming and alarm management,
- OPC DA Server, OPC DA and HDA Client,
- Enterprise Scaling as well as Cloud technology,
- Built-in Data Exports.

## Data Collection

Real-time data collection via **OSS Communication Drivers** is scheduled through an easy process of creating tasks, using the **OSS Client** configuration screens. The **OSS Communication Drivers**, most written to use the native protocol of the device manufacturer, communicate with hundreds of devices to collect both real-time and audit trail information automatically and store the data in the OSS Secure Database.

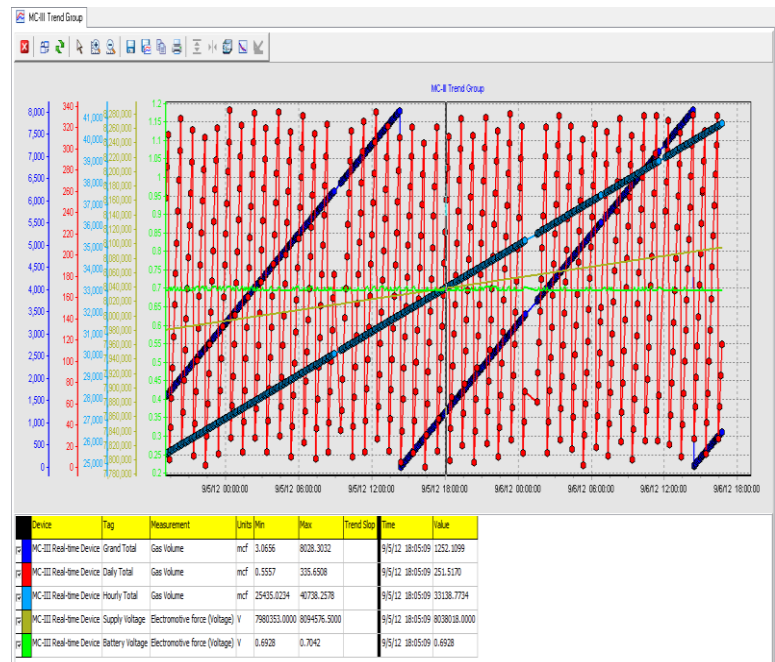
# Mimic Processes



Understand your complex processes with real-time updates in OSS Mimics. Perform real-time updates to devices and Control and Monitor your processes remotely.

## Advanced Trending

- Single & Multi-channel and Right-click Trending—Up to 10 y-axes,
- X-axis and Y-axis on-the-fly grab and adjust,
- Turn on and off channels on-the-fly to easily visualize data,
- Annotate Real-time data and keep them in history,
- Exporting Trend Data—To CSV, image or Excel,
- Trend Curve Analysis with Linear Analysis,
- X and Y-axis positional zooming as well as selection zooming,
- Multiple Vertical and Horizontal cursors at the same time,
- Save trends as trend groups.



**CPU LLC**

Metairie: 504-456-7446

Copyright July 2018

Houston: 713-392-4277

[www.cpullc.com](http://www.cpullc.com)

Fax: (504) 780-0454