

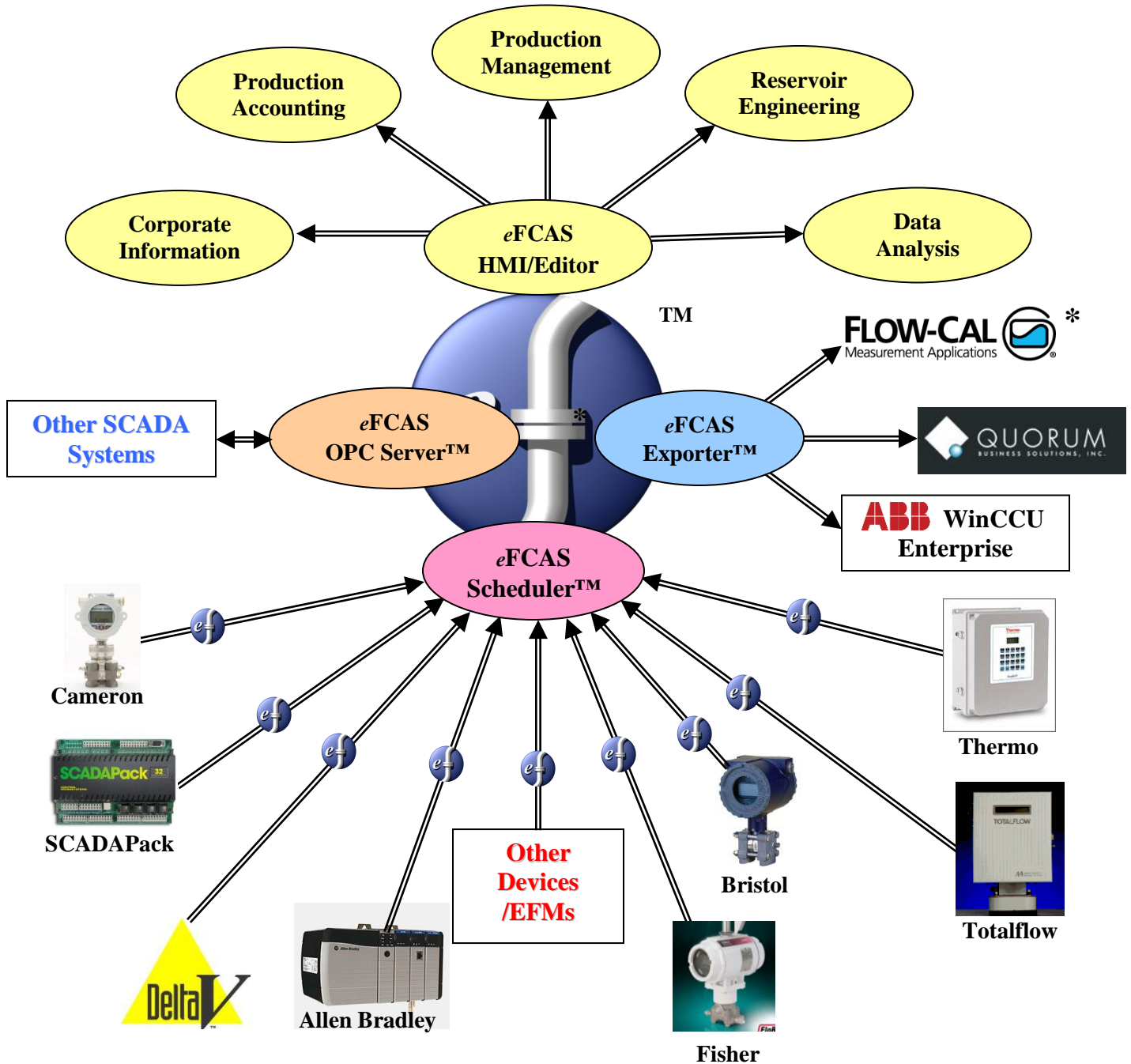


eFCAS™

Production Management

EFM Data Management System

- Gathering
- Validation
- Auditing
- Alarming
- Advanced Trending
- Real-time History
- Editing
- Reporting
- Dissemination



www.efcas.com

* Flow-Cal, Quorum, and ABB WinCCU, are Trademarks of respective companies



eFCAS™ Improves Corporate Bottom-line by:

- Automating EFM Historical and Real-time Data Collection, EFM Data Validation, and Production Reports,
- Automating API 21/Directive 17 and EPAP Compliance,
- Automating EFM Data-error Detection,
- Automating SCADA Collection of EFM Real-time Data,
- Automating Enterprise-wide Dissemination of EFM-related Information,
- Reducing System Integration Costs,
- Reducing Production Accounting Cycles and Prior Period Adjustments,
- Improving EFM Uptimes, Employee Productivity,
- Improving Life-cycle of Small Quantity Brand/Model EFM Installed Base,
- Deploying Industry Leader in ROI for EFM Data Management Systems.

eFCAS Suite of Tools for Managing EFM Data:

- Gathering—eFCAS Scheduler and eFCAS Communication Drivers™,
- Validation and Editing—eFCAS Editor™,
- Auditing—eFCAS Secure Database™,
- Gas Composition—eFCAS Manage Composition Utility™,
- Reporting—eFCAS Reports™,
- Easy 3rd Party Integration of Real-time Data —eFCAS OPC Server™,
- Exports to 3rd-party Validation Software—eFCAS Exporter™,
- Dissemination of EFM data enterprise-wide—eFCAS Editor™.
- Advanced Ad-hoc Reporting.

eFCAS Production Management:

- Real-time Device and Tag/Point Configuration,
- Real-time Data History and Historian Functionality,
- Advanced Real-time Trending,
- Mimic Configuration and Control,
- Complex Daily Production Reporting and Allocations,
- Alarm Summary Screens,
- Alarm History,
- Advanced Ad-hoc Reporting.

eFCAS Reports

The eFCAS advanced reporting system, which is built-in, uses “out-of-the-box” standard eFCAS Reports, or user-developed ad-hoc reports, which can be scheduled to run automatically, reducing reporting time and cost to the enterprise. eFCAS Reports can even be customized to do **Daily Production Reports** as well as **Allocation Reports**.

eFCAS Scheduler & eFCAS Communication Drivers

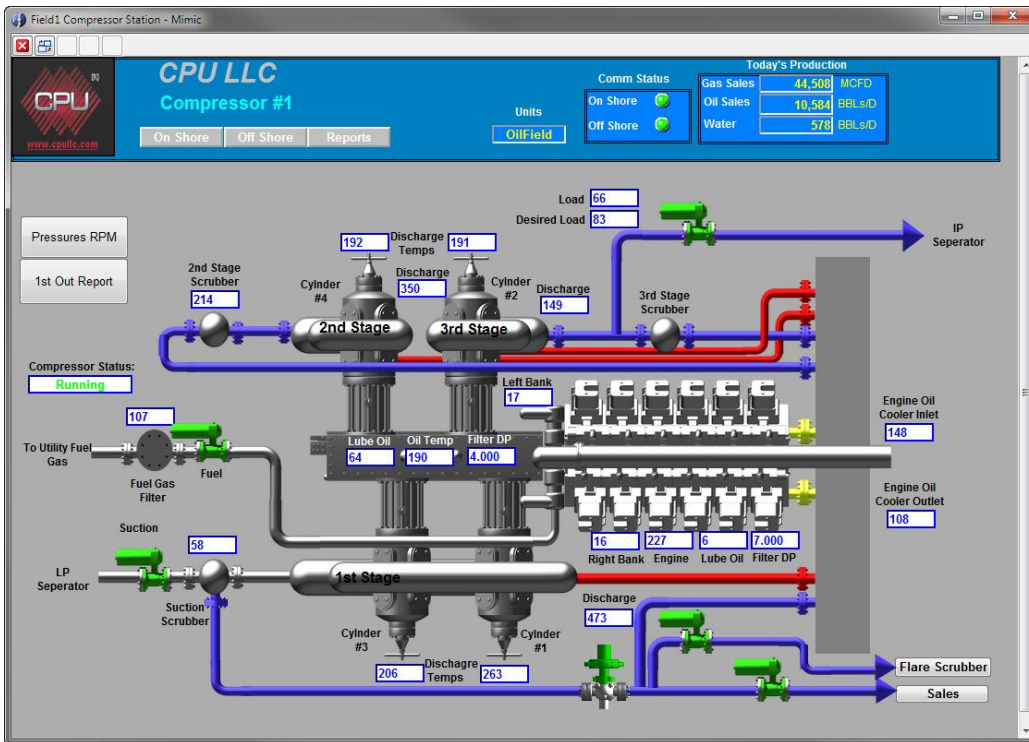
EFM data collection via eFCAS Communication Drivers is scheduled through an easy process of creating tasks, using the eFCAS Client configuration screens. The eFCAS Communication Drivers, most written to use the native protocol of the device manufacturer, collect both real-time and audit trail information automatically and store the data in the eFCAS Secure Database.



TM

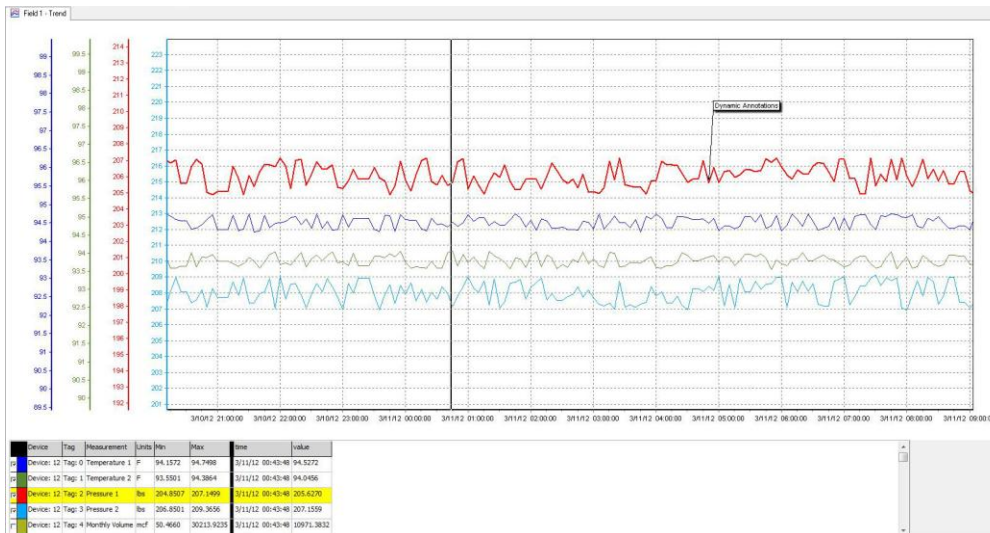
eFCAS Mimics

View your mimicked process with real-time updates for values.



eFCAS Advanced Trending

- Single & Multi-channel and Right-click Trending—Up to 10 y-axes,
- Turn on and off channels on-the-fly to easily visualize data,
- Annotate Real-time data and keep it in history.



eFCAS Advanced Trending



TM

eFCAS Problem Summary, Data Editing and Recalculation

eFCAS presents all meters and meter stations in a tree view, giving one-click access to tabular and graphical views of edited EFM data and original EFM data. eFCAS securely stores original data—which cannot be edited—along with the edited data. All data editing is tracked in an audit trail, capturing user’s name, time of, and reasons for changes.

		June, 2005																													
		W	Th	F	S	S	M	T	W	Th	F	S	S	M	T	W	Th	F	S	S	M	T	W	Th	F	S	S	M	T	W	Th
		01	02	03	04	05	06	07	08	09	10	11	12	13	14	15	16	17	18	19	20	21	22	23	24	25	26	27	28	29	30
0002-001m					S	S	S	S																							
0002-002m																															
0002-003m																M	M	M	M	M	M	M	M	M	M						
0002ms					S	S	S	S								M	M	M	M	M	M	M	M	M	M						
0003-001m																															
0003-002m																															
0003-003m																															
0003ms																															
0004-001m																															
0004-002m																															
0004ms																															

eFCAS Problem Summary Screen

Rapid Identification of Suspect Data—Data Problem Summary Screen

The Problem Summary Screen provides a summary view of all EFM collected data, alerting users when eFCAS detects missing or questionable data.

Benefit to Operations and Production to have both in one HMI:

The eFCAS Editor™ screens provide field personnel with:

- **Rapid access to any device, meter, trend group, mimic or meter station from familiar Tree View,**
- **Rapid overview of field problems using Mimics and Problem Summary Screens,**
- **Rapid EFM and field problem data identification and editing—tabular or graphical,**
- **Rapid recognition of many EFM hardware problems, and**
- **Real-time alarming and alarm management,**

all designed to reduce manpower requirements and reduce operating costs for the enterprise.

eFCAS OPC Server

The eFCAS OPC Server facilitates the connection from third-party SCADA systems, or any OPC client, to the eFCAS Scheduler and eFCAS Communications Drivers.

eFCAS Exporter

eFCAS™ is a complete EFM Data Management System with EFM validation capability built into the eFCAS Editor, and does not require any third-party validation software.



CPU LLC

Metairie: 504-456-7446

Copyright August 2012

Houston: 713-392-4277

www.cpullc.com

Fax: (504) 780-0454